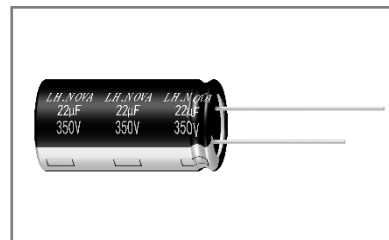


■RAS 系列铝电解电容器

RAS Series Aluminum Electrolytic Capacitor

◆特征 Features

- * 寿命: 105℃ 10000 小时
Load life: 105℃ 10000 hours.
- * 耐高纹波, 特长寿命
High ripple current, extreme long life.
- * 符合 RoHS
Compliant to the RoHS Directive.



◆应用 Application

- * 适用于各类 LED 照明产品、LED 驱动器等电子产品
Ideally designed for all kinds of LED lighting products、LED drive and other electronic products.

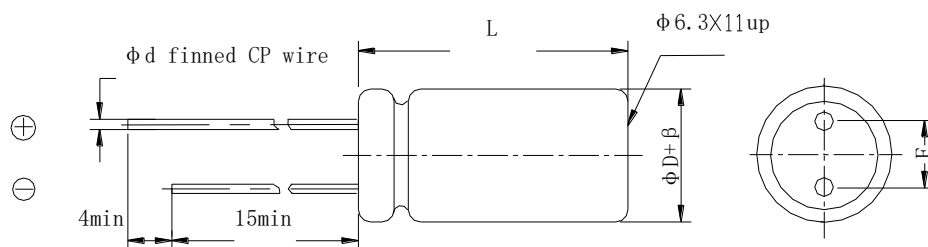
◆型号表示法 Part Number

8		151		MB		M		0511		RA		N		0		1		1		0			
代码 Code		产品类别 Type		代码 Code		电压 Voltage		代码 Code		尺寸 Dimensions ΦDxL(mm)		代码 Code		商标 Trademark		代码 Code		内码 Internal Code		代码 Code		产品脚型 Lead Forming Type	
8		成品 Product		MB		160		MC		200		MJ		220		MD		250		MF		350	
				VA		400		VB		450												0	
																						直脚方式 编带品 original type(vertical tape)	

代码 Code		标称容量 Nominal Capacitance		代码 Code		误差 Tolerance		代码 Code		型号 Series		代码 Code		胶管颜色 Sleeve Color		代码 Code		内码 Internal Code	
6R8		6.8uF		K		±10%		V		± ²⁰ ₁₀ %		M		±20%		Q		± ³⁰ ₁₀ %	
470		47μF																	
151		150uF																	

RA		RAS		0		黑色 Black		1		深蓝色 Deep-blue		7		棕色 Brown		9		绿色 Green	

1		普通品 regular		E		PET 胶管 平台胶粒		F		PET 胶管 凸台胶粒	

◆产品结构 Product Structure


β(mm)	±0.5			±1.0				
ΦD(mm)	5	6.3	8	10	12.5	16	18	22
F±0.5(mm)	2.	2.5	3.5	5.0		7.5		10.0
Φd±0.1(mm)	0.5		0.6			0.8		
L(mm)	11,12		12,16	12,16,	16,20,25	16,20,25,30,35	20,25,30,35,40	25,30,35,40
	L±2.0							

◆主要特性表 Main specifications

项目 Item	主要特性 Performance Characteristics	
额定工作电压范围 Rated Voltage Range	160~450V.DC	
使用温度范围 Operating Temperature Range	$-40^{\circ}\text{C} \sim +105^{\circ}\text{C}$	
标称静电容范围 Nominal Capacitance Range	1~150 μF	
静电容量允许偏差 Capacitance Tolerance	$\pm 20\%$ (M, $+20^{\circ}\text{C}$, 120Hz)	
漏电流 Leakage Current (20°C)	额定工作电压(V) Rated working voltage	160~450
	漏电流 Leakage current	2 分钟后 $I \leq 0.03CV + 25(\mu\text{A})$ After 2 min. $I \leq 0.03CV + 25(\mu\text{A})$
C: 标称静电容 (μF) Nominal Capacitance in μF V: 额定工作电压 (V) Rated working voltage in V		
损耗角正切 DF Dissipation Factor	额定工作电压(V) Rated working voltage	160~400 450
	DF(MAX) (20°C , 120Hz)	0.08 0.10
当容量值大于 1000 μF 时, 每增加 1000 μF , DF 值加 0.02 For capacitance of more than 1000 μF , add 0.02 for every increase of 1000 μF .		

浪涌电压 Surge Voltage Test	<table><tr><td>额定工作电压(V) Rated working voltage</td><td>160</td><td>200</td><td>250</td><td>350</td><td>400</td><td>450</td></tr><tr><td>浪涌电压(V) Surge voltage</td><td>200</td><td>250</td><td>300</td><td>400</td><td>450</td><td>500</td></tr></table>					额定工作电压(V) Rated working voltage	160	200	250	350	400	450	浪涌电压(V) Surge voltage	200	250	300	400	450	500	
	额定工作电压(V) Rated working voltage	160	200	250	350	400	450													
	浪涌电压(V) Surge voltage	200	250	300	400	450	500													
	施加表中所示浪涌电压，充电 30±5 秒，放电 5.5±0.5 分钟作为一个周期，共进行 1000 次。																			
	测试温度： 15℃-35℃然后在标准大气条件下放置达到热稳定， 测试各参数。																			
Application of DC surge Voltage stated at table,1000 times of charging for 30 ± 5 sec.,discharging with a period of 5.5± 0.5 min.. Test temperature: 15℃ -35℃And the capacitor shall be stored under standard atmospheric conditions to obtain thermal stability, after which measurements shall be made.																				
容量变化：在初始值的± 20%以内。损耗角正切值不大于规定值的 200%。漏电流：不大于初始规定值																				
Capacitance change:Within ± 20% of the initial value Dissipation factor: Not more than 200% of the specified value.Leakage current: more than the initial specified value																				
温度特性 Temperature Stability	<table><tr><td colspan="2">额定工作电压(V) Rated working voltage</td><td>160~250</td><td>350~400</td><td>450</td></tr><tr><td rowspan="2">阻抗比(120Hz) Impedance Ratio</td><td>z-25℃/z+20℃</td><td>3</td><td>5</td><td>6</td></tr><tr><td>z-40℃/z+20℃</td><td>8</td><td>8</td><td>12</td></tr></table>						额定工作电压(V) Rated working voltage		160~250	350~400	450	阻抗比(120Hz) Impedance Ratio	z-25℃/z+20℃	3	5	6	z-40℃/z+20℃	8	8	12
	额定工作电压(V) Rated working voltage		160~250	350~400	450															
	阻抗比(120Hz) Impedance Ratio	z-25℃/z+20℃	3	5	6															
z-40℃/z+20℃		8	8	12																
高温负荷特性 Load life	在+105℃ 环境中施加额定工作电压和最大允许纹波电流 10000 小时后,电容器的性能符合下面要求：																			
	After application of rated working voltage with max permissible ripple current specified at +105℃ for 10000hours, capacitors meet the characteristics requirements measured at +20℃ listed at below: 1、电容量变化率:±25%初始测量值以内 Capacitance change : ±25% initial measured value 2、漏电流: ≤初始规定值 Leakage current: ≤initial specified value 3、损耗角正切值≤200%倍初始规定值 Dissipation factor: ≤200% initial specified value																			
高温贮存特性 Shelf life	在+105℃环境无负荷放置 1000 小时后, 根据 JIS-C-5101-4, 加额定电压 30min.,常温放置 24~48 小时后测试， 电容器的性能符合下面要求:																			
	After leaving capacitors under no load at +105℃for 1000 hours, According to JIS-C-5101-4, apply the rated DC voltage for 30 minutes and store the capacitors under room temperature for 24-48 hours. The capacitors meet the characteristics listed as below: 1、电容量变化率:±20%初始测量值以内 Capacitance change : ±20% initial measured value 2、漏电流: ≤初始规定值 Leakage current:≤initial specified value 3、损耗角正切值≤200%倍初始规定值 Dissipation factor: ≤200% initial specified value																			

<p>耐焊接热</p> <p>Resistance to soldering heat</p>	<p>焊锡温度: $260 \pm 5^{\circ}\text{C}$, 浸入时间: 10 ± 1 秒, 浸入深度: 1.6mm</p> <p>Solderbath temperature: $260 \pm 5^{\circ}\text{C}$, Immersion time: $10 \pm 1\text{sec}$.</p> <p>Immersion depth: 1.6mm</p> <p>外观: 无异状</p> <p>Appearance: No remarkable abnormality</p> <p>容量变化: 在初始值$\pm 10\%$范围内</p> <p>Capacitance change: Within $\pm 10\%$ of the initial value.</p> <p>损耗角正切值: 不大于初始规定值</p> <p>Dissipation factor: \leq initial specified value</p> <p>漏电流: 不大于初始规定值</p> <p>Leakage current: \leq initial specified value</p>
<p>稳态湿热</p> <p>Resistance to damp heat (steady state)</p>	<p>试验温湿度: $40 \pm 2^{\circ}\text{C}$, 90~95%RH</p> <p>试验时间: $500 \pm 10\text{h}$</p> <p>试验后, 电容器在标准大气条件下 2 小时, 然后测试参数</p> <p>Test temperature and humidity: $40 \pm 2^{\circ}\text{C}$, 90~95%RH</p> <p>Test time: $500 \pm 10\text{h}$</p> <p>After completion of test, the capacitor shall be subjected to standard atmospheric conditions for 2 hours, after which measurements shall be made.</p> <p>外观: 无异状</p> <p>Appearance: No remarkable abnormality</p> <p>容量变化: 在初始值$\pm 10\%$范围内</p> <p>Capacitance change: Within $\pm 10\%$ of the initial value.</p> <p>损耗角正切值: 不大于初始规定值</p> <p>Dissipation factor: \leq initial specified value</p> <p>漏电流: 不大于初始规定值</p> <p>Leakage current: \leq initial specified value</p>
<p>防爆试验</p> <p>Safety vent</p>	<p>以下试验只适用于铝壳直径$\geq \Phi 8$ 产品。</p> <p>The following tests only apply to those products with vent products at diameter $\geq \Phi 8$ with vent.</p> <p>在电容器两极施加反向直流电压, 其中通过的电流为 1A, 在测试时防爆装置应能在 30 分钟内动作。</p> <p>DC Application test: The capacitor shall be subjected to a reverse DC voltage. The current flowing through the capacitor shall be 1A. If the vent does work with the voltage applied for 30 minutes, the test is considered to be passed.</p> <p>应无引线、铝箔等散射, 无火花产生</p> <p>The safety vent is actuated under the test conditions, thereby preventing terminals, metal pieces, etc, of the capacitor from scattering due to burst, the case from separating from the seal packing, or the capacitor from producing flame.</p>

可焊性 Solder ability	<p>焊锡温度：235±5℃</p> <p>浸入时间：2±0.5 秒</p> <p>Temperature of solder: 235±5℃</p> <p>Dipping time: 2±0.5sec.</p> <p>This specification shall be met after the capacitors are stored under standard atmospheric conditions for 6 months.</p> <p>浸入焊锡的引线表面积约 90%以上应附着新锡。</p> <p>At least 90% of circumferential surface of the dipping portion of terminal shall be covered with new solder.</p>																								
端子强度 Terminal strength	<p>端子抗拉强度：沿电容器端子引线方向施加拉力(如下表)，10±1 秒。</p> <table><tr><td>引线直径 Φ</td><td>0.45</td><td>0.50</td><td>0.60</td><td>0.80</td><td>1.00</td></tr><tr><td>拉力 N</td><td>5</td><td>5</td><td>10</td><td>10</td><td>20</td></tr></table> <p>Tensile strength of terminal: A static load shall be applied to the terminal in the axial direction and acting in a direction away from the body for 10±1 sec.</p> <p>端子抗弯强度：在电容器引线施加固定重力（如下表），然后 5 秒内完成将电容体弯折 90° 后回到原位，再向相反方向弯折 90° 后回到原位。</p> <table><tr><td>引线直径 Φ</td><td>0.45</td><td>0.50</td><td>0.60</td><td>0.80</td><td>1.00</td></tr><tr><td>拉力 N</td><td>2.5</td><td>2.5</td><td>5</td><td>5</td><td>10</td></tr></table> <p>Bending strength of terminal: Hang the specified dead weight, in about 5 sec then bend the body through 90°, return to the original position. Next bend it in opposite direction through 90° with the same speed, again return to the original position</p> <p>外观：无可见机械损伤</p> <p>Appearance: no visible mechanical damage</p> <p>电容器应无接触不良开路或短路</p> <p>The capacitor shall be no intermittent contacts, or open or short circuiting</p>	引线直径 Φ	0.45	0.50	0.60	0.80	1.00	拉力 N	5	5	10	10	20	引线直径 Φ	0.45	0.50	0.60	0.80	1.00	拉力 N	2.5	2.5	5	5	10
引线直径 Φ	0.45	0.50	0.60	0.80	1.00																				
拉力 N	5	5	10	10	20																				
引线直径 Φ	0.45	0.50	0.60	0.80	1.00																				
拉力 N	2.5	2.5	5	5	10																				
振动试验 Resistance to vibration	<p>在 3 个互相垂直的方向分别施加 2 小时振动，共 6 小时。</p> <p>频率：10-55Hz</p> <p>振幅峰-峰值：1.5mm.</p> <p>振速：1 分钟内振速 10~55~10Hz</p> <p>Direction and duration of vibration:</p> <p>3 orthogonal directions mutually each for 2h , Total 6h.</p> <p>Vibration frequency range :10-55Hz.</p> <p>Peak to peak amplitude: 1.5mm</p> <p>Sweep rate :10 to 55 to 10Hz in about 1 min.</p> <p>外观：无可见机械损伤</p> <p>Appearance: no visible mechanical damage</p> <p>电容器应无接触不良开路或短路</p> <p>The capacitor shall be no intermittent contacts, or open or short circuiting</p>																								

◆尺寸表、允许纹波电流、纹波电流频率因子
Dimensions and ripple current and frequency coefficient

*纹波电流频率因子

Ripple current frequency coefficient

Freq (Hz)	50 (60)	100 (120)	1K	10K	≥100K
Coefficient	0.25	0.50	0.80	0.90	1.00

*尺寸表与允许纹波电流

Dimensions and ripple current

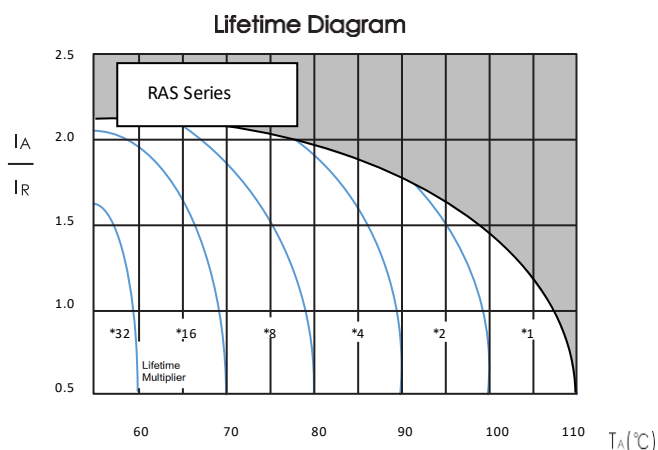
Rated voltage	Rated capacitance	Case size	Rated ripple current
额定电压(V)	标称容量(μF)	尺寸 D×L (mm)	额定纹波电流 (mA rms/105°C/100KHz)
160	1	6.3X12	50
	1.2	6.3X12	53
	1.5	6.3X12	55
	1.8	6.3X12	60
	2.2	6.3X12	70
	2.8	6.3X12	75
	3.3	6.3X12	78
	4.7	8X12	85
	5.6	8X12	95
	6.8	8X16	110
	8.2	8X16	130
	10	8X16	225
	15	8X16	280
	22	10X16	475
	33	10X20	570
	47	12.5X25	660
	68	12.5X25	800
	100	16X25	1120
	150	16X30	1280
200	1	6.3X12	55
	1.2	6.3X12	58
	1.5	6.3X12	60
	1.8	6.3X12	70
	2.2	6.3X12	75
	2.8	6.3X12	80
	3.3	6.3X12	90
	4.7	8X12	125
	5.6	8X12	135
	6.8	8X16	150

Rated voltage	Rated capacitance	Case size	Rated ripple current
额定电压(V)	标称容量(μF)	尺寸 D×L (mm)	额定纹波电流
			(mA rms/105°C/100KHz)
	8.2	8X16	160
	10	8X16	225
	15	8X16	355
	15	8X20	375
	22	10X16	505
	22	10X20	530
	33	12.5X20	600
	47	12.5X20	625
	47	12.5X25	660
	68	16X25	860
	100	12.5X30	880
	100	16X25	1080
	150	12.5X40	1120
	150	16X35	1290
250	1	6.3X12	55
	1.2	6.3X12	58
	1.5	6.3X12	60
	1.8	6.3X12	70
	2.2	6.3X12	80
	2.8	6.3X12	90
	3.3	6.3X12	100
	4.7	8X12	135
	5.6	8X12	150
	6.8	8X10	140
	8.2	8X16	170
	10	8X16	240
	15	8X20	380
	22	10X16	475
	33	12.5X20	570
	47	12.5X20	645
	68	12.5X30	865
	68	16X25	870
	100	12.5X35	965
	100	16X30	1140
	150	12.5X50	1285
	150	16X25	1400
350	1	6.3X12	55
	1.2	6.3X12	58

Rated voltage	Rated capacitance	Case size	Rated ripple current
额定电压(V)	标称容量(μF)	尺寸 D×L (mm)	额定纹波电流
			(mA rms/105°C/100KHz)
	1.5	6.3X12	60
	1.8	6.3X12	65
	2.2	6.3X12	70
	2.8	8X12	80
	3.3	8X12	90
	4.7	8X12	130
	5.6	8X16	150
	6.8	8X20	180
	8.2	8X20	235
	10	10X20	270
	15	10X20	340
	22	12.5X20	470
	33	16X20	600
	47	16X20	750
	68	18X25	880
	100	18X30	1120
400	1	6.3X9	65
	1.2	6.3X12	68
	1.5	8X12	78
	1.8	6.3X12	73
	1.8	8X12	85
	2.2	6.3X12	78
	2.2	8X12	85
	2.8	8X16	95
	3.3	6.3X12	90
	3.3	8X12	105
	3.3	8X16	110
	4.7	8X12	110
	4.7	8X20	150
	5.6	8X20	160
	5.6	10X16	180
	6.8	8X20	180
	6.8	10X16	220
	8.2	8X20	250
	8.2	10X16	265
	10	10X16	285
	10	10X20	300
	15	8X40	340

Rated voltage	Rated capacitance	Case size	Rated ripple current
额定电压(V)	标称容量(μF)	尺寸 D×L (mm)	额定纹波电流
			(mA rms/105°C/100KHz)
	15	12.5X20	400
	22	8X50	470
	22	12.5X25	532
	33	10X45	620
	33	16X25	600
	47	12.5X40	680
	47	18X25	790
	68	12.5X55	870
	68	18X30	900
	100	18X40	1100
450	1	6.3X12	50
	1	8X12	55
	1.2	8X12	60
	1.5	8X12	75
	1.8	8X12	85
	2.2	8X16	95
	2.8	8X16	100
	3.3	8X16	110
	4.7	8X20	150
	5.6	10X16	180
	6.8	10X20	220
	8.2	10X20	266
	10	10X25	300
	15	8X45	395
	15	12.5X20	398
	22	10X40	500
	22	16X20	550
	33	10X50	615
	33	16X25	665
	47	12.5X45	720
	47	16X35	810
	68	18X30	900
	100	18X40	1100

◆ 产品特征曲线 Product Characteristic Curve

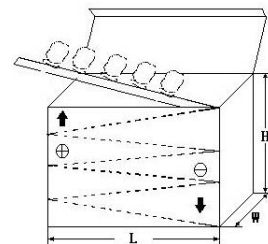


I_A = 120Hz 时的实际纹波电流， I_R = 120Hz 时的额定纹波电流，105°C
使用寿命系数与环境温度和纹波电流负载的函数关系。

◆ 包装 Packaging

* 编带产品包装规范与数量 Taped packaging quantity

ΦD	Qty. (Pcs)	L(电容高度) $\leq 22mm$	L(电容高度) $= 25\pm 2mm$
		LxWxH(mm)	LxWxH(mm)
$\Phi 5$	2000	328x235x50	328x235x57
$\Phi 6.3$	1500		
$\Phi 8$	1000		
$\Phi 10$	600		
$\Phi 12.5$	400		
$\Phi 16$	250		
$\Phi 18$	200		



* 散装品包装数量 Bulk packaging quantity

直径 $\Phi D(mm)$ Diameter	高度 L(mm) Length	数量 (只/袋) Quantity (pcs/bag)	袋/盒 bag/box	内箱/外箱 Inner box/outer box	(只/箱) psc/box
$\Phi 4$	7-8	1000	15	4	60000
$\Phi 5$	5-7	1000	12	4	48000
$\Phi 5$	11	1000	10	4	40000
$\Phi 6.3$	5-7	1000	10	4	40000
$\Phi 6.3$	8-15	1000	8	4	32000
$\Phi 6.3$	15-20	1000	6	4	24000
$\Phi 8$	5-12	500	8	4	16000
$\Phi 8$	14-16	500	8	4	16000
$\Phi 8$	20	500	6	4	12000
$\Phi 10$	9-13	500	6	4	12000
$\Phi 10$	14-16	250	8	4	8000
$\Phi 10$	17-20	250	8	4	8000
$\Phi 10$	25-30	200	8	4	6400
$\Phi 10$	31-35	200	6	4	4800

Φ12-Φ13	16-28	200	6	4	4800
Φ12-Φ13	30-40	100	8	4	3200
Φ12-Φ13	45-55	100	6	4	2400
Φ16	15-20	100	8	4	3200
Φ16	21-30	100	6	4	2400
Φ16	31-40	50	10	4	2000
Φ18	15-20	100	6	2	1200
Φ18	25-30	50	8	2	800
Φ18	35-40	50	6	2	600
Φ18	41-50	25	10	2	500
Φ20	25-40	50	10	2	1000
Φ22	25-35	50	5	2	500
Φ22	≥40	25	10	2	500

◆贮存方法 Storage Methods

- * 请保管在室温 5℃~35℃，湿度 75%RH 以下的环境
- * (1) 产品储存期限：≤12 个月；Storage life: ≤12 months
- * (2) 产品储存期限超 12 个月时，需充电后再使用
- * (3) 产品储存时间超过 3 年的应报废处理
- * (4) 库存有效期以套管上印刷的时间开始计算
- * (5) 请尽量以包装状态保管
- * (6) 当电容器长期储存后，漏电流会升高，温度越高，漏电流上升越快，因此应注意储存环境。如铝电解电容器的漏电流上升对电路有不良影响，请在使用前充电处理
- * (7) 请避免在以下环境中保管
 - ① 溅水、高温高湿及结露的环境；
 - ② 溅油、或者充满气体油成分的环境；
 - ③ 充满酸性有毒气体（硫化氢、亚硫酸、亚硝酸、氯、溴、溴化甲烷等）的环境；
- * We recommend the following conditions for storage: Ambient temperature: 5℃~35℃, Ambient humidity: Less than 75% RH.
- * (1) Storage life: ≤12 months;
- * (2) If storage life time is over 12 months, the products need to be recharged;
- * (3) If storage life time is over three years, the product need to be discarded;
- * (4) Expiry date: calculating from the date marked on the sleeve;
- * (5) Please keep capacitors in the original package;
- * (6) Leakage current tends to increase when capacitors have been stored for long period of time. The higher temperature, the faster leakage current rises. Please take caution when selecting the storage location. The leakage current decreases gradually as voltage is applied to the capacitor. If the rising leakage current may cause problems in the circuit, please charge the capacitor before using.
- * (7) Avoid storing the capacitors under such circumstances:
 - ① Environment of water splashing, high temperature, high humidity and dewing;

- ②The environment that splashes oil, or is filled with gas oil;
- ③With full of acid toxic gases environment such as(hydrogen sulfide , sulfurous acid, nitrous acid, chlorine , bromine, methyl bromide, etc.

◆铝电解电容器使用注意事项

Important information on the application of aluminum electrolytic capacitors

*铝电解电容器使用注意事项

* (1) 直流铝电解电容器应按正确的极性使用

当直流铝电解电容器被反极性接入电路时，电容器会导致电子线路短路，由此产生的电流会引致电容器损坏。若电路中有可能在负引线施加正极电压，请选用无极性产品

* (2) 在额定工作电压以下作用

当电容器上所施加电压高于额定工作电压时，电容器的漏电流将上升，其电气特性将在短时期内劣化直至损坏。请注意电压峰值勿超出额定工作电压

* (3) 常规产品禁止作快速充放电使用

当常规电容器被用作快速充电用途。其使用寿命可能会因为容量下降，温度急剧上升等而缩减。

* (4) 施加纹波电流应小于额定值

施加纹波电流超过额定值后，会导致电容器体过热，容量下降，寿命缩短。所施加纹波电压的峰值应小于额定工作电压。

* (5) 使用环境温度

铝电解电容器的使用寿命会受到环境温度的影响。据科学统计，使用环境温度下降 10℃其使用寿命增加 1 倍。

* (6) 引出线强度

当拉力施加到电容器引出线，该拉力将作用于电容器内部，这将导致电容器内部短路，开路或漏电流上升。在电容器焊装到电路板，请勿强烈摇动电容器。

* (7) 焊接过程耐热性

铝电解电容器装至电路板进行浸焊或波峰焊时，其塑料套管可能因焊接时间过长、温度过高发生破裂或二次收缩。

* (8) 电路板的安装孔距及安装位置

电路板安装孔的设计应与产品说明书的引线脚距相一致，如果将电容器强行插入孔距不配套的电路板，那么会有应力作用于引出线，这将导致短路或漏电流上升。

* (9) 铝电解电容可能会有残留电压，请在使用前对电容器进行放电。

(1) DC aluminum electrolytic capacitors should be used according to the correct polarity

When a DC aluminum electrolytic capacitor is connected to a circuit with reverse polarity, the capacitor will cause a short circuit in the electronic circuit, and the resulting current will cause damage to the capacitor. If it is possible to apply positive voltage to the negative lead in the circuit, please choose a non-polar product.

(2) Function below rated operating voltage

When capacitor is used at higher voltage than the rated voltage, leakage current increases, characteristics drastically deteriorate and damage in a short period may occur as a result. Please take extra caution that the peak voltage should not exceed the rated voltage.

(3) Conventional capacitors are prohibited from being used for fast charging and discharging

When aluminum electrolytic capacitors for general purpose are employed in rapid charge and discharge application, its life may be shorted by capacitance decreasing, heat rising, etc.

(4) The applied ripple current should be less than the rated value

Excessive heat will reduce capacitance and result in shortened life of capacitor if ripple currents exceeding the specified rated value are applied. The peak value of the ripple voltage should be less than the rated voltage.

(5) Operating ambient temperature

Its ambient temperature closely affects the life of an aluminum electrolytic capacitor. It is generally stated, that life doubles for each 10°C decrease in temperature.

(6) Terminal Strength

When a strong force is applied to the lead wires or terminals, stress is put on the internal connections. This may result in short circuit, open circuit or increased leakage current. It is not advisable to bend or handle a capacitor after it has been soldered to the PCB board.

(7) Heat resistance during welding process

In the dip soldering process of PCB board with aluminum electrolytic capacitors mounted, secondary shrinkage or crack of PVC sleeve may be observed when solder temperature is too high or dipping time is too long.

(8) Installation pitch-row and installation position of circuit boards

PCB board must be designed so its hole coincides with the lead pitch (lead spacing) of the capacitor specified by the catalog or specifications. When a capacitor is forcibly inserted into an unmatched hole, a stress is put on the leads. This could result in a short circuit or increased leakage current.

(9) Aluminum electrolytic capacitors may have residual voltage, please discharge the capacitor before use.

◆推荐安装/焊接方法 Recommended Installation/Welding Methods

*波峰焊接条件

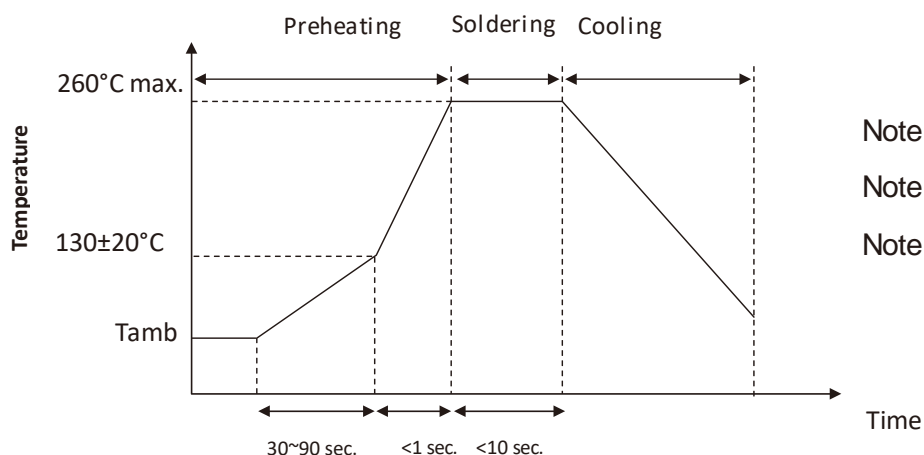
预热: 105°C

波峰焊: 260±5°C 10±1 秒以下 (或 380±10°C 3±0.5 秒以下: 手焊)

*Wave Soldering Conditions

Preheating: 105°C

Wave Soldering: 260±5°C for ≤10±1 seconds (or 380±10°C for ≤3±0.5 seconds for manual soldering)



Note 1: (1~3°C)/sec.

Note 2: Approx. 200°C/sec.

Note 3: 5°C/sec.(max.)

◆其它说明 Others

*本产品不含铅、镉等元素

This product does not include Plumbum or Cadmium.

[illegible]

Note: The content provided above is the product specification. Fenghua reserves the right to modify this content without prior notice when the product remains unchanged. Any product changes will be notified to customers via PCN.